

RUINS

left side

[print out 2 times to create box]



fold and glue to base

fold and glue to base



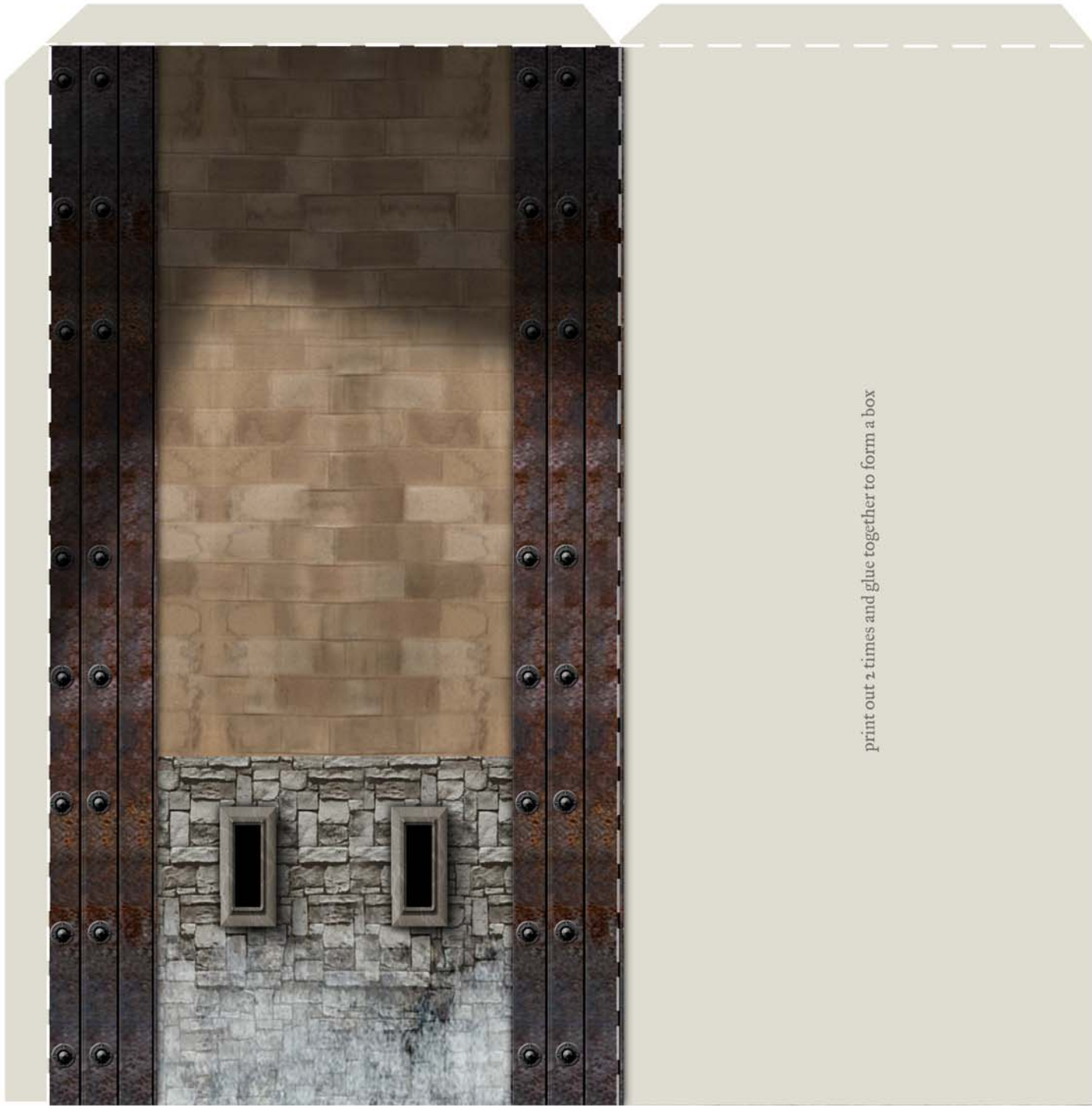
RUINS

right side

[print out 2 times to create box]

print out 2 times and glue together to form a box



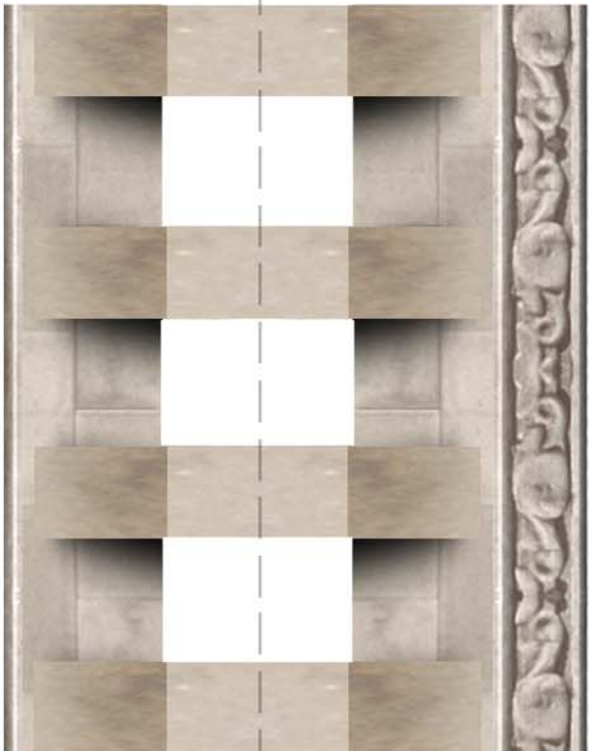


print out 2 times and glue together to form a box

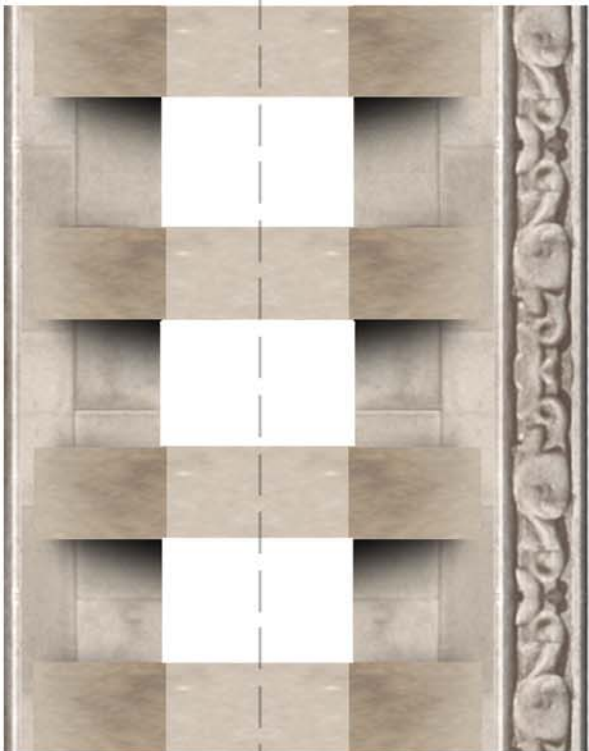


cut out slot for portcullis lift handle

TOP



score here



score here



cut out slot for portcullis lift handle

cut out, score along dashed line, fold over and glue to form a single piece

END CRENELLATIONS

